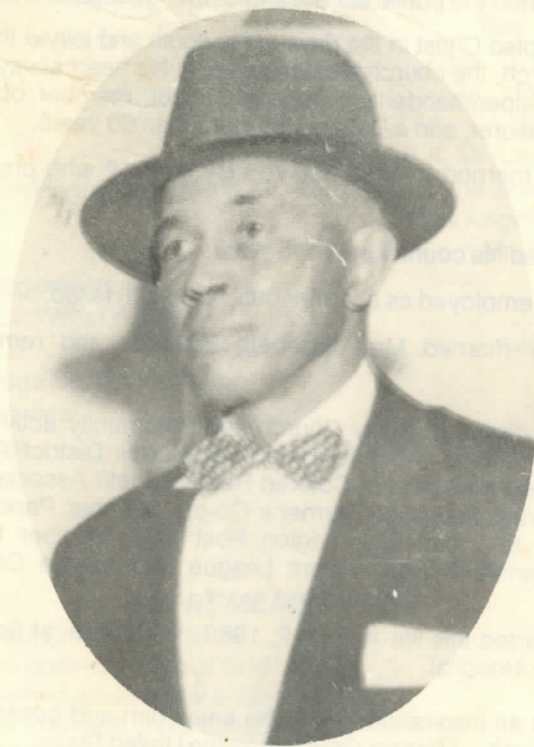


**The Memorial Tribute**  
To  
**Deacon Edward Thomas**



1889 — 1980

**Concord Baptist Church**  
Batesville, Mississippi

**August 6, 1980**  
**2:00 P.M.**

**Rev. John Snow, Pastor, Officiating**

## OBITUARY

Bro. Edward Thomas, the son of the late Edwin Thomas and Sarah James Thomas was born July 15, 1889 in Panola County, Batesville, Mississippi.

He attended the public school and Sardis College of this county.

He accepted Christ in the days of his youth and joined the Concord Baptist Church, the church that was dear to his heart always. Here he served as Superintendent of Sunday School, member of the Choir, Church Treasurer, and a Deacon for more than 60 years.

He was married to Miss Betsy Perry in 1912 who preceded him in death.

He served his country in World War I.

He was employed as a farmer until his health failed.

He later married Mrs. Elizabeth Edwards and remained until death.

He was active in many Church and community activities. Some included Treasurer and Board Member, Sardis District Association, Treasurer and President of Colored Home Benefit Association, Board Member, West Batesville Farmer's Co-op, Member Panola Masonic Lodge No. 6A, American Legion Post 249, Member N.A.A.C.P., member Panola County Voters League and Panola County Farm Bureau.

He departed this life August 2, 1980, 10:00 a.m. at South Panola Community Hospital.

He was an inspiration to all who knew him and possessed many friends throughout Panola County and the United States.

He leaves to cherish his memories a devoted wife, five sons, David and Lamar of Batesville; Dewitt of Chicago, Illinois; Horace of Oakland, California; and Otis of Okolona, Mississippi; one daughter, Ann of Chicago, Illinois; one brother, George of Batesville, Mississippi; 5 daughters-in-law, Pauline and Matilda of Batesville, Mississippi; Varris of Oakland, California; Rosa, of Chicago, Illinois; and Frankie of Okolona, Mississippi; one son-in-law, Thomas of Chicago, Illinois; 13 grandchildren; 4 great grandchildren; 3 sisters-in-law; a host of neices, nephews, other relatives and friends.